

# FOUR CHARACTERISTIC WALTZES

Composed by

S. COLERIDGE-TAYLOR.

Op. 22.

**VIOLIN II**

# FOUR CHARACTERISTIC WALTZES

Composed by

S. COLERIDGE-TAYLOR.

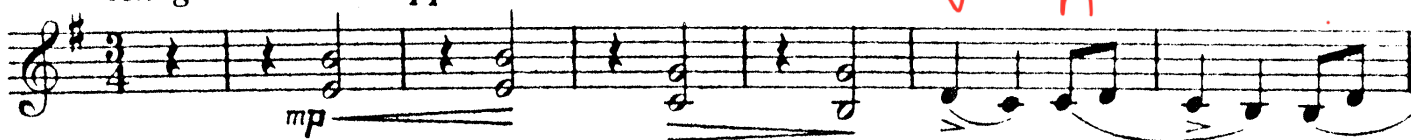
VIOLINO SECONDO.

Op. 22.

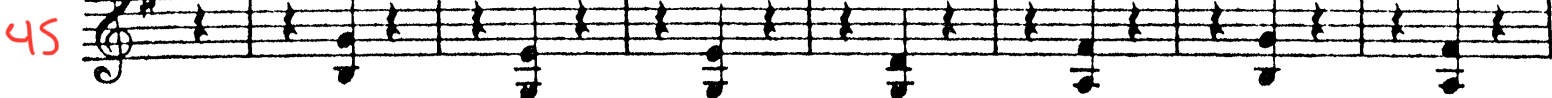
Handwritten:  $\frac{3}{4}$

I.

*Allegro ma non troppo.*



*Tempo 1º pizz.*



52 *arco* *cresc.* *cresc.*

58 *ff*

65 *dim.* *rall.* *Poco meno mosso* *dolce*

73 *f* *mp*

82 *f* *poco rit.* *Tempo Iº* *mp*

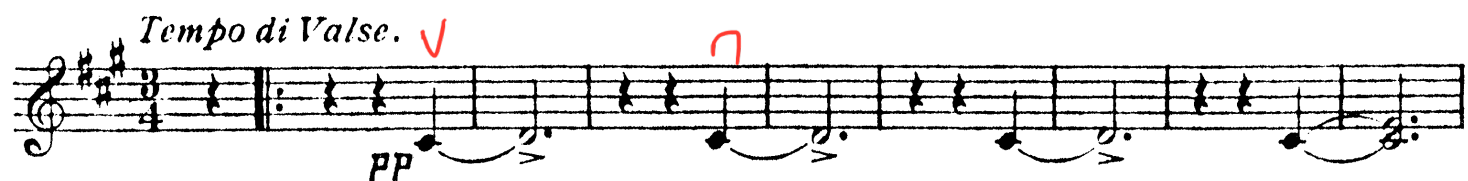
90 *mf*

97 *f*

103 *f* *accel.* *sf* *sf* (112)

## II.

## VIOLINO SECONDO.



# VIOLINO SECONDO.

5

80 *a tempo* *ff*

88 *sf* *rall.*

97 *a tempo* *mp* *poco rit. a tempo*

106 *dim.* *pp*

114 *poco rit.* *a tempo* *sf*

123 *rall.* *a tempo* *mp*

133

142 *poco rit.* *a tempo* *f* *dim.*

152 *Con anima.* *f* *rall.* *pizz.* *sf*

166

## III.

## VIOLINO SECONDO.

*Andante. Con sentimento.*

divisi

*mp*  
con sordini*f*dim. *p* dim. *pp**cresc.*

dim.

*p**cresc.**rall.*

dim.

*a tempo**pp**f**poco**a**poco**rall.*

dim.

*p**Poco più moto.*

unis.

*pp**pp**p**cresc.**accel.**p**cresc.**poco**a**poco**cresc.*



89 *ff* *rall.* *dim.* *p*

105 *f* *dim.* *tranne*

117 *p* *cresc.* *rall.* *dim.* *p* *Tempo 1<sup>o</sup>*

125 *f* *dim.* *p* *dim.* *pp*

136 *cresc.* *dim.* *p*

145 *cresc.* *f* *cresc.* *ff* *dim.* *rall.*

153 *a tempo* *pp* *f*

163 *rall.* *pp* *mf* *unis.* *morendo* *pp*

173 *mf* *pp* *pp dim. e rall.*

## IV.

## VIOLINO SECONDO.

*Allegro furioso.*

Fl.

6

13

20

27

34

44

51

58

*f*

*ff*

*sf*

*p*

*pp*

*rit.*

*a tempo*

*pizz.*

*arco*

*V*

*Vrit.*

*3*

*f*

*ff*

*sf*

*p*

*pp*

*arco*

*pizz.*

*sf*

*pp*

*sf*

*pp*



66 *arco* *dim.* *rall.*

71 *a tempo* *fp* *f* *ff*

86 *sempre ff*

90 *f* *ff*

96 *rit.* *a tempo*

103 *ff* *f*

110 *ff* *sff*

116 *sff*

123 *sempre ff accel. al fine.* *sff*

130